

Valley Brook Development
Helen Gresham Wilson McCray
11-23-87 cor
Blanks Lot
Valley Brook Development

Blank lot
Shadobrook Dev Corp
4-13-88
6-22-88
7-1-88
7-11-88
7-19-88

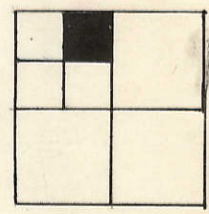
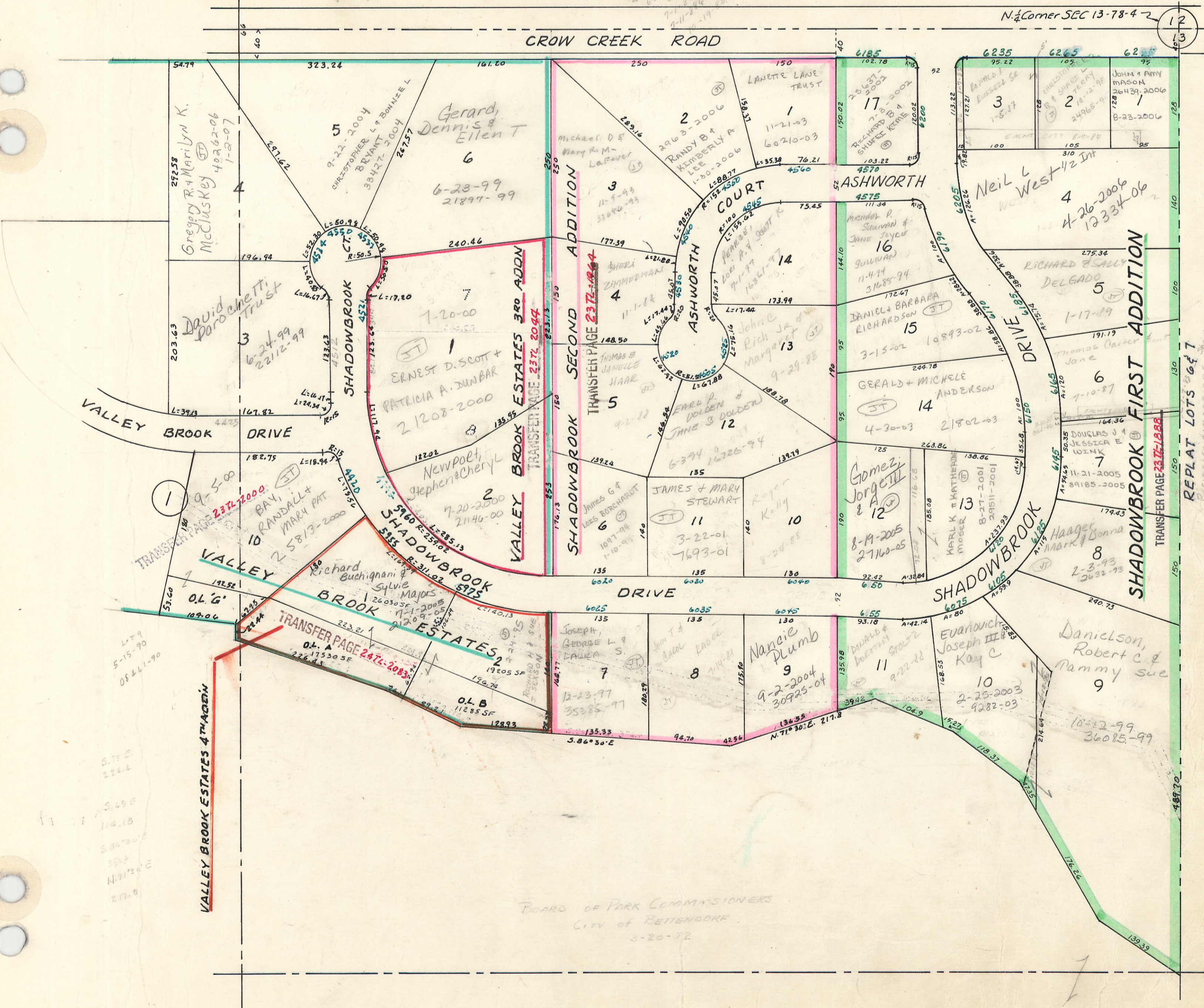
NE 1/4 NW 1/4 Sec. 13
City of BETTENDORF
Scale 1" = 100'

3

51
SEC 12

N 1/4 Corner SEC 13-78-4-2

12
13



REPLAT LOTS 6 & 7
Plat dimensions of Shadowbrook
remain the same
See Inst. No. 19508-04
Meadowbrook
Development
4-3-84

5

BOARD OF PARK COMMISSIONERS
CITY OF BETTENDORF
3-20-72

19